

FAUSTINA[®]

USER MANUAL

**HOME-USE RF
BEAUTY DEVICE**

SKIN REJUVENATION

SKIN TIGHTENING

PORE SHRINKAGE



LABOTEST

Welcome

to your new FAUSTINA RF device



FAUSTINA®

Table of Contents

Preface	1 - 2
Product Notice	3
Product Information	4 - 5
Warnings	6 - 7
Cautions	8 - 9
Mode & Level Selection	10 - 11
Charging the device	12
How to use FAUSTINA RF	13 - 17
Cleaning the device	18
Mode Introductions	19 - 21
Main Parameters	22
Warranty	23 - 25
Service Information	26

Preface

Thank you for choosing FAUSTINA® RF multi-functional, radio-frequency beauty device. This technology uses radio-frequency heating, vibration, ion importation and exportation, low-frequency EMS (Electrical Muscle Stimulation), LED technology, semi-conductor refrigeration techniques, and more. This device can be used by anyone, suitable for all skin types and can easily be integrated into your daily skin care routine.

To get the most out of your multi-functional beauty device with consideration for health & safety, below are our suggestions for your reference:

Please view and read this user manual very carefully before using the device, and keep this manual safe in case you need to refer to it in the future.

If you have any problems with your device, feel free to contact us on our website at www.labotest.co.uk/contact.

Product Notice

- This user manual will guide you through the usage of your FAUSTINA RF device.
- The manufacturer of this product follows sustainable development strategies. This means they retain the right not to notify customers when they change product function, interface and appearance.
- If there is a difference between the description and the actual product due to an upgrade, please refer to the actual product.
- Please use the device according to the correct operational steps and treatment settings.

Product Information

Contains:

Main unit x1, Ring x1, Adapter x1, User manual x1

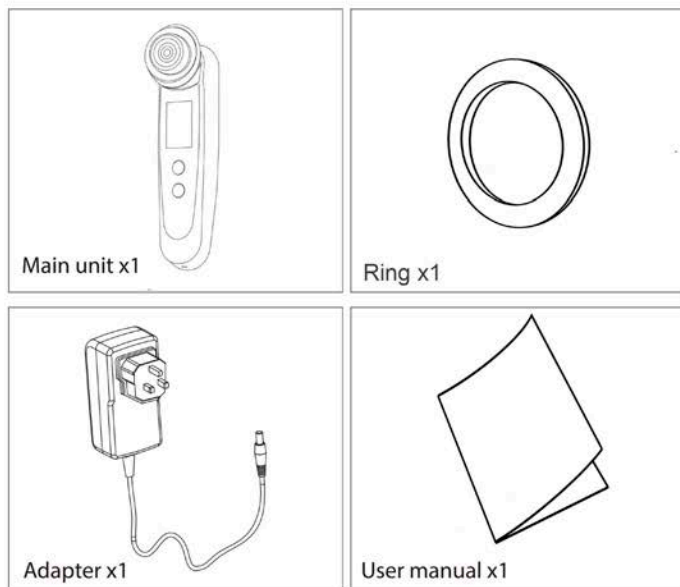
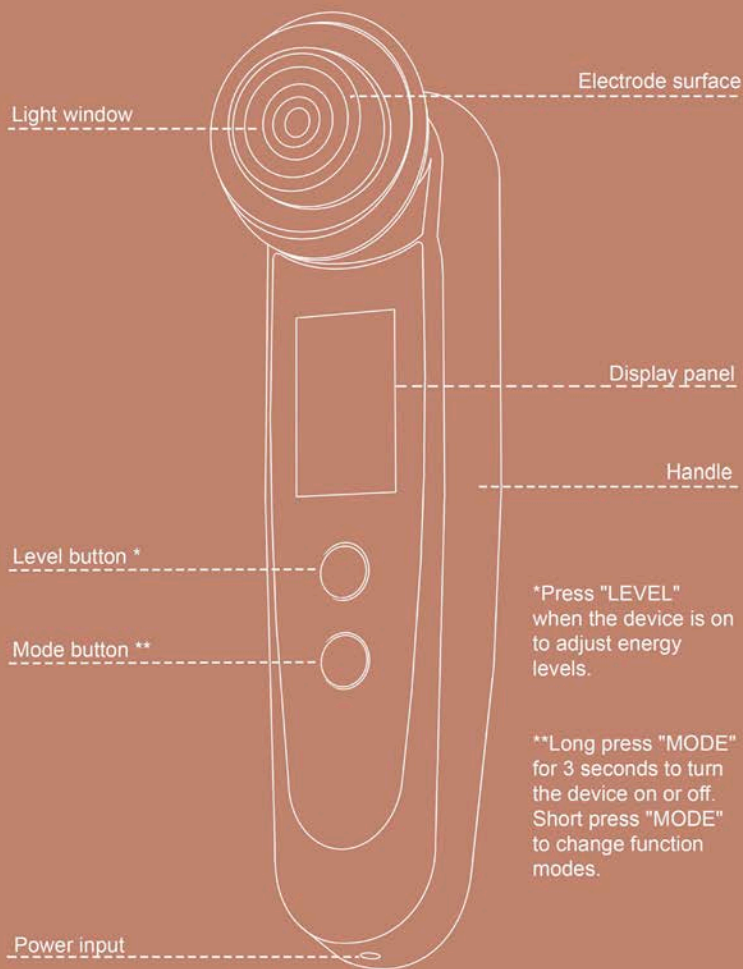


Figure 1

Product Structure: (Figure 2)



Warnings

Please read through these carefully

DO NOT USE if you are under the age of 18.


+18

DO NOT USE if you are pregnant, menstruating, conceiving or breast-feeding.



DO NOT USE if you have skin infections, burns, anti-clotting disorders, open wounds, skin allergies, inflammation, scars, eczema or dermatology issues.



DO NOT USE if you suffer from heart disease, hypertension, coronary heart disease, diabetes, skin cancer, thyroid issues, or any other blood vessel related disease.



DO NOT USE If you had Botox injections or hyaluronic acid for less than 3 months, or gold Implantation for less than 6 months.

DO NOT USE if you have hearing aids, heart pacemakers or heart machines.

DO NOT USE the device on throat, eyes, ears, eyelids, temples.

Cautions

Please read through these carefully

Keep the handle clean before & after use each time.
Use a clean cloth to wipe it. Do not use water.



Once finished with treatment, avoid putting the device in direct sunlight, take steps to protect it from the sun, and away from UV light in general.



Please make sure your unit's system, accessories and lamp(s) do not get in contact with any water or humidity.

Before undergoing the treatment, clean your skin and make sure it's dry. Do not apply cosmetics as certain chemicals could cause the device to malfunction or not work as intended.



Adjust the energy level from low to high. On condition of safety, the higher the energy level, the better your results will be. After your treatment, it is normal to experience redness. In those cases, it is recommended you apply an ice pack to the affected areas.



Please store the device and its accessories in a dry and ventilated environment, and keep away from children.

DO NOT turn on the device while charging. It takes about one hour to fully charge the device. Make sure the battery is full before using.



In case your device becomes submerged or otherwise soaked in water, please send it back to the manufacturer for examination to determine whether it is repairable. In case the system is on when soaked, please immediately UNPLUG your system first before touching the device for your health and safety.

DO NOT try to disassemble and repair at your own discretion.

If your device fails to operate normally, please return the unit and accessories back to the manufacturer, where qualified maintenance personnel will examine it for you.



MODE SELECTION

When using RF Clean or RF Moisture modes, you will hear a 'beep' which means the ion exportation & importation is starting. When you hear a double 'beep' that means the RF mode is starting (however, RF mode will not display).

When all modes (except COOL + Blue LED) have ended, the device will enter into the next mode. Alternatively, the "MODE" button can start the Flashing mode. Note that this device will turn itself off automatically after 2 minutes of no activity.

The COOL mode will not switch to standby mode, but will turn off automatically. You will hear a distinct noise before this happens.



RF Clean



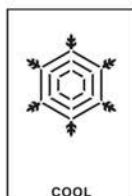
RF Moisture



EMS UP



RF+RED LED



Cool+ Blue LED

LEVEL SELECTION

Choose the RF Clean or RF Moisture mode. Pressing the "LEVEL" button will allow you to choose ion moisture importation and exportation energy.

Choose the RF LED mode. Pressing the "LEVEL" button will allow you to choose different RF levels.

This device has 5 levels on each mode. Please always choose the most comfortable level to use, according to your skin type & toleration. •The "LEVEL" button allows you to adjust levels at any time, as the picture below shows.

We suggest using level 1 if this is your first time using this device.



CHARGING THE DEVICE

Picture A: What is shown on the display when the device is charging (the battery icon will increase, go back down and increase again).

(Full battery)



Picture A

Picture B: What is shown on the display when the device has finished charging (the battery symbol remains full)

(Charging)



Picture B

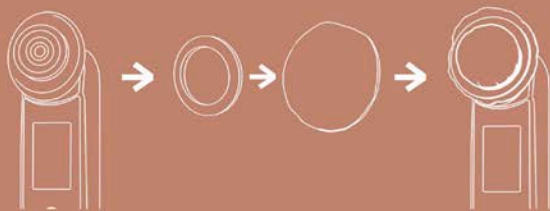
HOW TO CHARGE

1. Before you use your device, please charge it first and make sure the battery is full.
2. Please **DO NOT** turn on the device while charging.
3. It takes about one hour to fully charge the device, which can be used for about 40 minutes non-stop.
4. When charging, please keep the room temperature at or below 25°C. Charging times may vary depending on environment and how much power remains.

How to use FAUSTINA FR

It's so simple — you'll love it

- 1** Put one cotton pad on the electrode surface, then place the ring on it.
- If the ring cannot hold the cotton pad in place, switch to a thinner cotton pad (if your cotton pad is too thick, your skin will not feel any warmth from the device).



- 2** Use the cotton pad on the device to wipe any cosmetic toner or gel.
- Please wipe the toner or gel equally on the electrode surface.
 - This device is not water-proof, so please wipe off all remaining toner or gel on the electrode surface after using the device.



Please move the device along different areas of your skin.
Do not remain in one position for too long to avoid scalding.
Different skin types will alter the way this device feels on your skin.

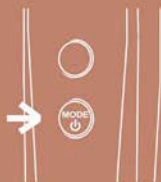
Cleansing Method

- 1 Take off all make-up and wash your face, remove any oil or dirt remaining, keep your skin clean (Colling mode can be used with make-up).



- 2 When necessary, fix the cotton pad on the device and wipe toner.

- 3 Press the "MODE" button to turn on the device. Choose your desired mode and level.



- 4 The hand you use to hold the device should touch only the back of the device, and not the electrode surface.



- 5.** Make sure the electrode surface clings onto your skin when using the device. Please note, if your skin is very sensitive use the RF Modes in a low level.



-
- 6** After cleansing, you can use special skin cream to help repair your skin.
-

- 7** Take off the cotton pad, wipe off all toner or gel on the handle and electrode surface after using the device. Do not clean it with water.



TIPS

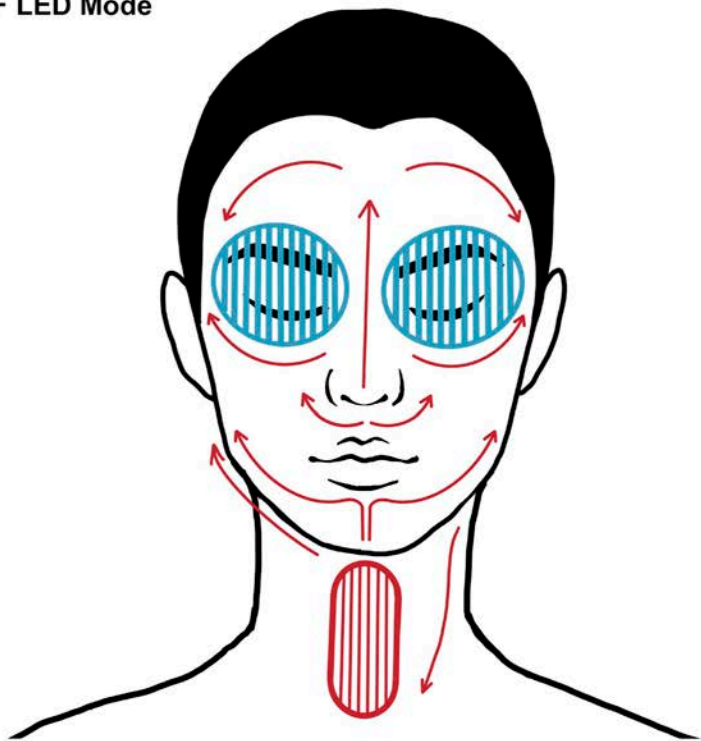
We suggest you move the device at a constant speed of 2cm/s

If the electrode surface of the device feels too hot on your skin, move the device at a faster pace.

The electrode surface should always cling to your skin. Do not use the device on your eyelids or round the eyes.

Refer to the image below for guidance on where to use your device and how to move it around on different modes. Please note: You can use the RF LED mode around your eyes, but make sure you close your eyes before doing so to avoid getting dazzled. The electrode surface should not touch your skin (Recommended distance: 2cm away).

RF LED Mode



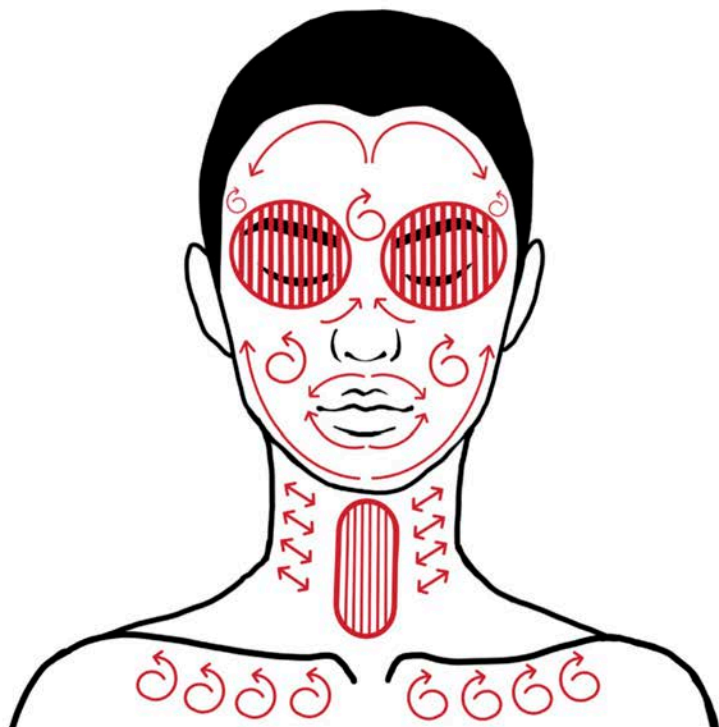
Means this area cannot be used



Means these areas can be illuminated, but the electrode surface should not be touching your face around here

Please note the EMS mode is different from the other functions in the device, it does not need to vibrate in order to work effectively. It is perfectly normal to not feel anything when moving the device around the skin. On certain occasions, you may feel a tingling sensation if the level you are using is high, and/or if you are using it for a long time.

EMS UP Mode



Means this area cannot be used



Means you should move the device as the arrows show

COOL Mode: Press against your face, move the device according to the arrows

Cleaning the device

- 1** Unplug the adaptor from the device.



- 2** Use a damp cotton cloth to clean any dirt remaining on the electrode surface. Do not use alkaline or alcohol solutions, essential oils, diluters, or any other harsh chemicals.



- 3** Please use a dry cotton cloth to wipe any excess dirt off, except on the electrode surface and extra ring.



- 4** If you do not plan on using the device for a long while, please clean it and store it appropriately. Unplug the adaptor from the device.

MODE INTRODUCTION

1. RF Clean Mode:

Display: CLEAN

Characteristic: Warms skins, absorbs dirt that is hard to clean when washing face.



Function	RF+ ion clean+ vibration	Using frequency	2-3 times every week
Time	About 3 minutes	Recommended cosmetic	Moist toner
Level	5 levels	Cotton pad	Need

2. Moisture Mode:

Display: MOISTURE

Characteristic: Warms skins, helps to import nutrients to skin cuticles, deep-nourishes skin, makes skin shiny and moisturised.

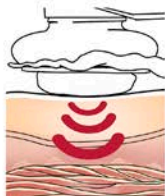


Function	RF+ion moisture+vibration	Using frequency	2-3 times every week
Time	About 3 minutes	Level	5 levels
Cotton pad	If use toner need cotton pad, if use mask no need.		

3. RF EMS Mode:

Display: EMS UP

Characteristic: Warms skins, stimulates muscles, restores skin elasticity (can also be used on shoulders).



Function	EMS	Using frequency	2-3 times every week
Time	About 3 minutes	Recommended cosmetic	Moist toner / gel
Level	5 levels	Cotton pad	No need

4. RF RED LED Mode:

Display: RF RED LED

Characteristic: Warms skins, gives skin light treatment.

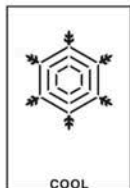


Function	Red LED skin rejuvenation	Using frequency	2-3 times every week
Time	About 3 minutes	Recommended cosmetic	Moisture cream and Skin rejuvenation gel.
Level	5 levels	Cotton pad	No need

5. RF Cooling Mode:

Display: COOL + Blue LED

Characteristic: Shrinks pores by cooling the skin. Locks moisture and improves skin elasticity



Function	Cooling skin	Using frequency	Everyday
Time	About 3 minutes	Recommended cosmetic	No
Level	No	Cotton pad	No need

ATTENTION

Do not use water-based soluble, oil-based soluble cosmetics or scrubbing cleansers.

Once finished with the cooling mode, the device will get hot. Please do not continue using this mode, cut off power instead to let the device cool down 30 minutes or more.

Main Parameters

Charging power: DC 9.5V 2.5A

Working Voltage: DC 7.4V

Adapter: AC 100-240V

Frequency rate: 50/60Hz

Battery capacity: 900mah

Power Supply: Recharge

Battery working time: 1.5H

Charging time: 0.8H

Face power output: 25W

Body power output: 14 W

Output frequency: 1.0 MHz

Type of product: Bipolar and Tripolar RF radio frequency facial device

The technology: RF / EMS current

Cooling Temperatures: 8-12 °C

radiofrequency temperatures: 40-60 °C

Device size: 188*45*63.5mm

Device N.W: 0.24KG

FAUSTINA RF box size: 21.9*14.8*6.0cm

Weight (1pcs): 0.8KG

Storage temperature: 0°C-50°C

Working temperature: 5°C-35°C

Working humidity: 25%-75%

Warranty

In case anything happens...

Warranty period

- Main unit: The warranty of the main unit is 1 year from the date of purchase.

Warranty scope

If the system is within its warranty period, the manufacturer will replace your product with a new one after checking for non-artificial reasons. Other faults that result from abnormal use and forced maneuvers are not covered.

Warranty limits

When applying for free maintenance for the product that is within its warranty period, customers should show valid proof of purchase (such as an invoice, warranty card, any kind of receipt or bank statement, etc).

Free maintenance is not provided for products which have been damaged due to improper use or tampering.

We will not cover any of the following

- Faults and general damage caused by fires, earthquakes, third party behaviour, fault or misuse by users. Usage under any other abnormal conditions and unpredictable events.
- Any extended damage caused by the usage of your products (such as business discrepancies, loss of benefits, interruption of business including the loss of results from improper usage of system, and the resulting cost from replacement of equipment, device or service, or claim required by users).
- Damage resulted from improper use which is outside the content of instructions listed in this manual.

This includes:

Uncontrollable situations, required service of parts for solving problems that result from the usage of accessories, fittings or substitutes that are not sold by the manufacturer or our company, and the required service for solving problems that result from unacceptable or illegal disassembly and re-assembly of the instrument without proper instructions.

- Faults or damage that results from an environment that is not suitable for the product.
- Improper storage by users (such as damage caused by critters and liquid infiltration).

Warranty Card

Fill in the details to make a claim

Full Name:

Product Name:

Model:

Purchase Date:

Check Out Standard:

GB4706.1-2005

Please attach proof of purchase.

This product complies with standard quality requirements after testing, and is approved for release.

Service Information

Thank you for buying from us

Dear customer,

Thank you for purchasing our product! In order to provide you with the highest quality service, please refer to the contact information below if you're facing any problems or issues with your newly purchased FAUSTINA® RF beauty device.

Email: support@labotest.co.uk

Company website: www.labotest.co.uk

LABOTEST
HOME BEAUTY DEVICES & LAB EQUIPMENT

Suite 503,
Crown House Business Centre
North Circular Road,
London, NW10 7PN,
United Kingdom

www.labotest.co.uk