



FAUSTINA
RF

**ONE
DEVICE
WITH
ALL
YOU
NEED**



**FIRMING
PORE SHRINKAGE
SKIN TIGHTENING
SKIN REJUVENATION**



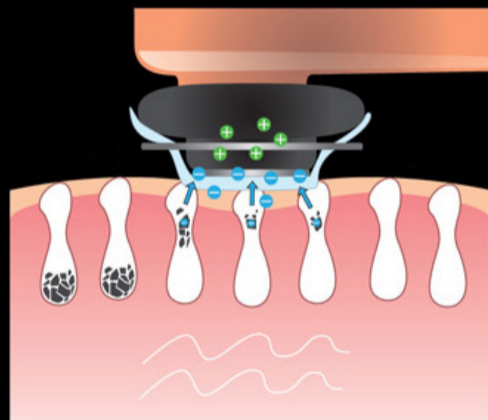
FAUSTINA RF
uses radio waves
energy to heat
tissue and
stimulates
collagen and
elastin production



**5 MODES
THAT WORK
WITH
ALL SKIN
TYPES**

WONDERING HOW FAUSTINA RF CLEANS YOUR SKIN?

Deep cleaning with
FAUSTINA RF



Regular washing by hand



CLEANING MODE

**Cleans clogged
pores effectively**



MOISTURE MODE

**Helps
moisturising
your skin and
can be used
with skin
products**



LED MODE

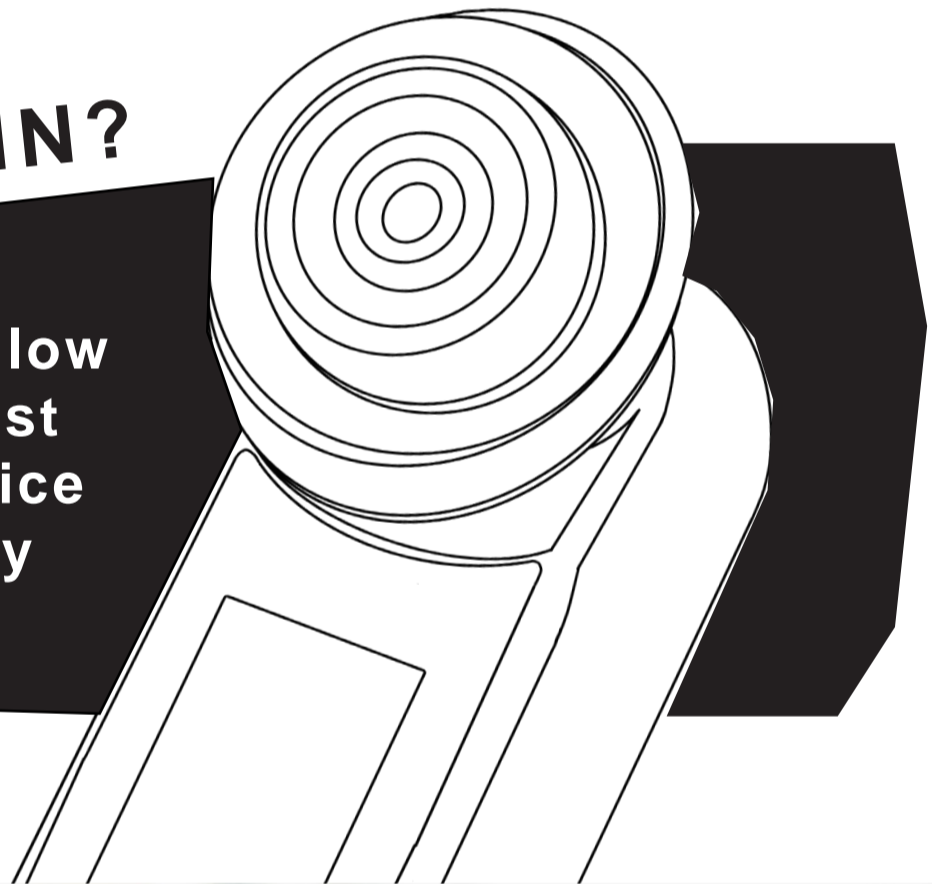
DETOXIFIES

STIMULATES
LYMPHATIC
DRAINAGE

IMPROVES
BLOOD
CIRCULATION

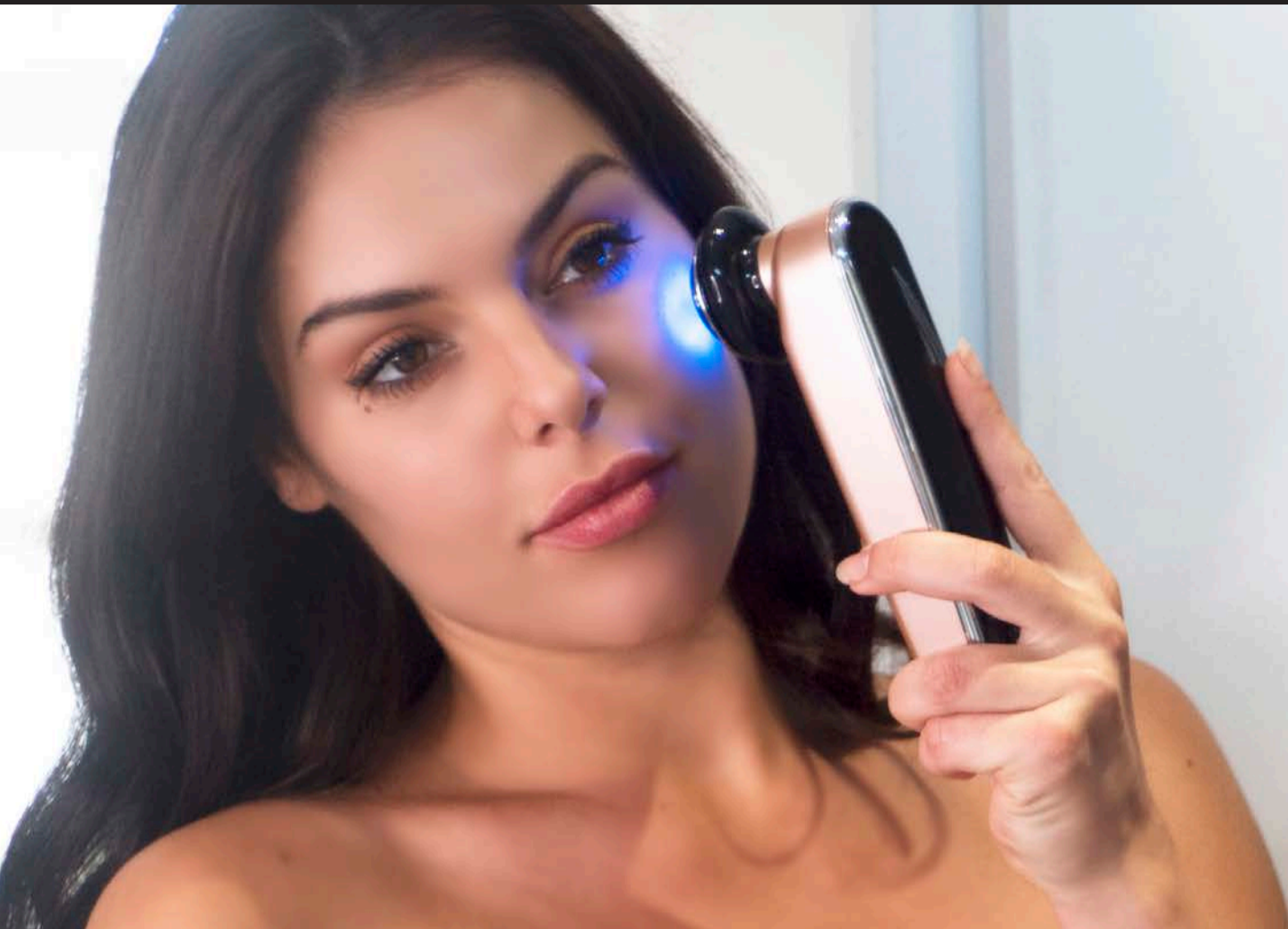
SENSITIVE SKIN?

We suggest using a low level if it's your first time using this device or if you have very sensitive skin.



EMS MODE

Electrical Muscle Stimulation
TONE FIRM STRENGTHEN
Can be used around
shoulders

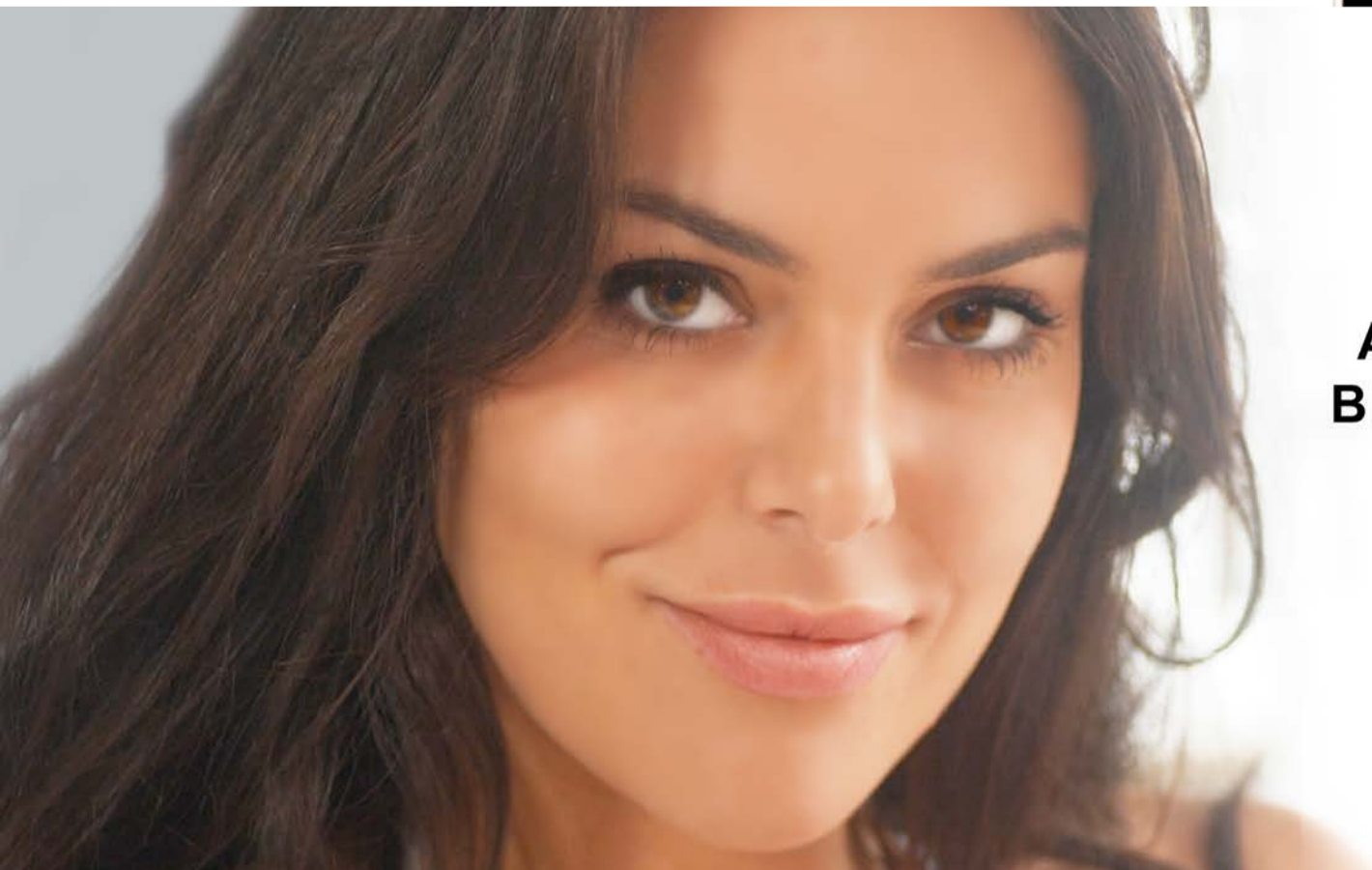


**COOLING
MODE**

**SHRINKS
PORES**

**IMPROVES
SKIN
ELASTICITY**

**HEALTHY
SMOOTH
SKIN**



**AT HOME TECHNOLOGY
BEAUTIFULLY DESIGNED,
JUST FOR YOU.**